

Anti-SEZ6 hlgG1 Antibody(ABBV-011)

Product information

GM-86544AB-10	10 µg
GM-86544AB-100	100 µg
GM-86544AB-1000	1 mg

Antibody Information

Species Reactivity	Human; Mouse; Cynomolgus
Clone	ABBV-011
Source/Isotype	Monoclonal human IgG1, κ
Application	Flow cytometry; Bioactivity-ELISA
Specificity	Detects SEZ6
Gene	SEZ6
Other Names	hSEZ-6, SEZ6, Seizure Protein 6 Homolog, HSEZ-6, BSRPC, SEZ-6, Seizure protein 6
Gene ID	Q53EL9 (human); Q7TSK2 (mouse); A0A2K5WPJ4 (Cynomolgus);
Background	SEZ6 (Seizure-related gene 6) is a gene encoding a protein that plays a crucial role in the development and function of the nervous system. The SEZ6 protein is key in synaptic formation and signal transmission between neurons. Studies have shown that SEZ6 is closely associated with neuronal migration, synaptic plasticity, and neurodegenerative diseases.
Storage	Store at 2-8°C short term (1-2 weeks). Store at ≤ -20°C long term. Avoid repeated freeze-thaw.
Formulation	Phosphate-buffered solution, pH 7.2.
Endotoxin	< 1 EU/mg, determined by LAL gel clotting assay

Data Examples

Flow cytometry

H_SEZ6 HEK-293 Cell Line (Catalog # GM-C36533) was stained with Anti-SEZ6 hlgG1 Antibody(ABBV-011) (Catalog # GM-86544AB) or isotype control antibody, followed by anti-Human IgG APC-conjugated Secondary Antibody.

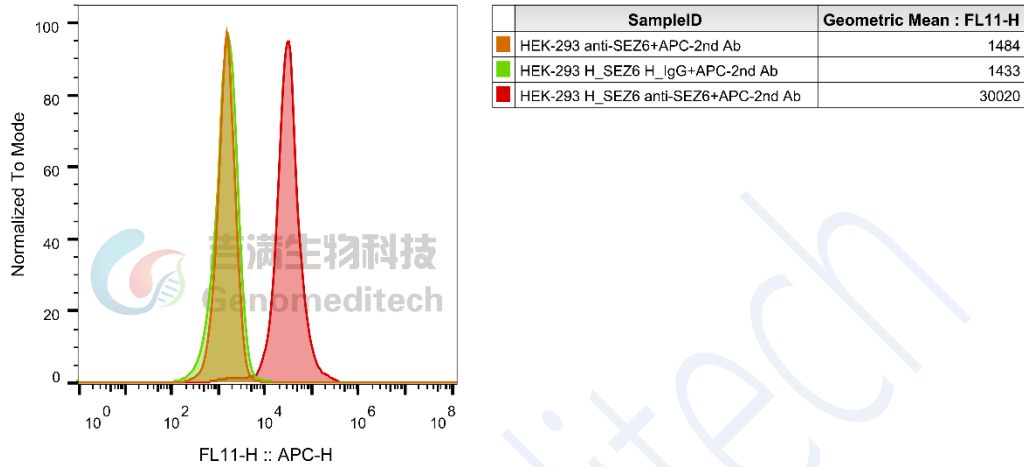


Fig. FACS

Bioactivity-ELISA

Mouse SEZ6 Protein; His Tag (Catalog # GM-86897RP) was immobilized at 1 µg/ml (100 µL/well). Increasing concentrations of Anti-SEZ6 hlgG1 Antibody(ABBV-011) (Catalog # GM-86544AB) were added.

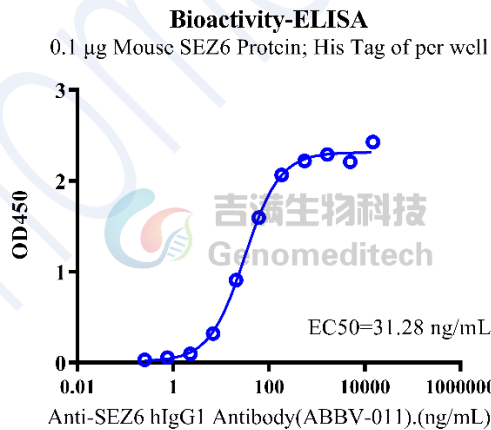


Fig. Assay

Bioactivity-ELISA

Human SEZ6 Protein; His Tag (Catalog # GM-86891RP) was immobilized at 1 µg/ml (100 µL/well). Increasing concentrations of Anti-SEZ6 hIgG1 Antibody(ABBV-011) (Catalog # GM-86544AB) were added..

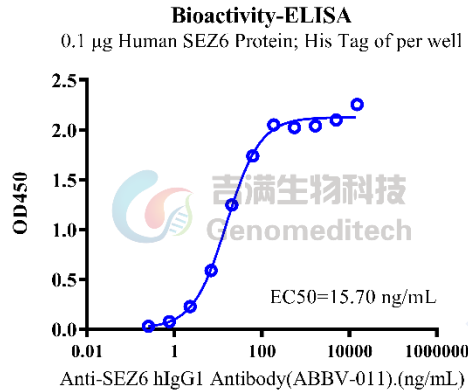


Fig. Assay

Bioactivity-ELISA

Cynomolgus SEZ6 Protein; His Tag (Catalog # GM-86895RP) was immobilized at 1 µg/ml (100 µL/well). Increasing concentrations of Anti-SEZ6 hIgG1 Antibody(ABBV-011) (Catalog # GM-86544AB) were added.

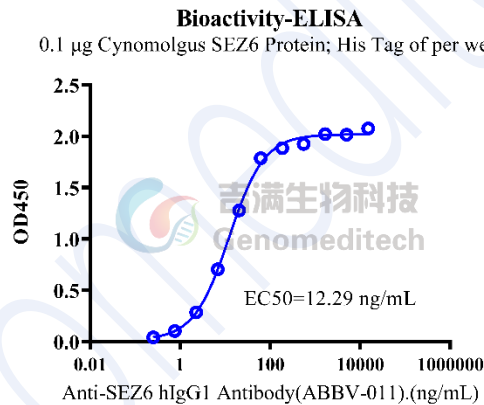


Fig. Assay

Bioactivity-ELISA

Biotinylated Cynomolgus SEZ6 Protein; His-Avi Tag (Catalog # GM-86896RP) was immobilized at 1 µg/ml (100 µL/well) on streptavidin precoated. Increasing concentrations of Anti-SEZ6 hIgG1 Antibody(ABBV-011) (Catalog # GM-86544AB) were added.

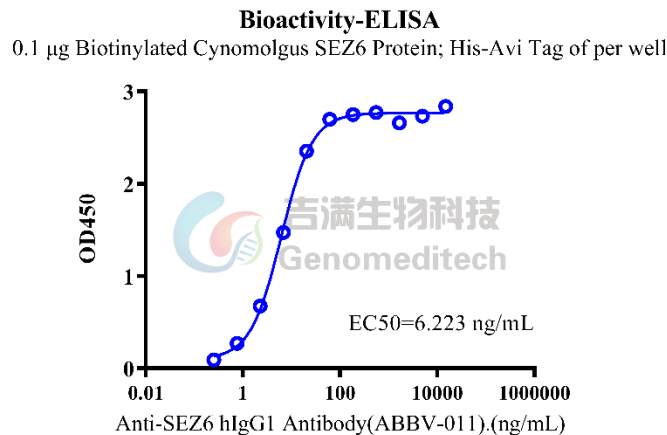


Fig. Assay

Version:3.3

Bioactivity-ELISA

Human SEZ6 Protein; mFc Tag (Catalog # GM-86894RP) was immobilized at 1 µg/ml (100 µL/well). Increasing concentrations of Anti-SEZ6 hIgG1 Antibody(ABBV-011) (Catalog # GM-86544AB) were added.

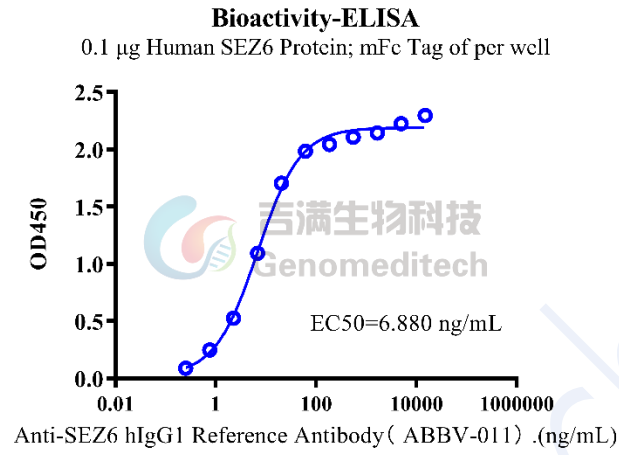


Fig. Assay